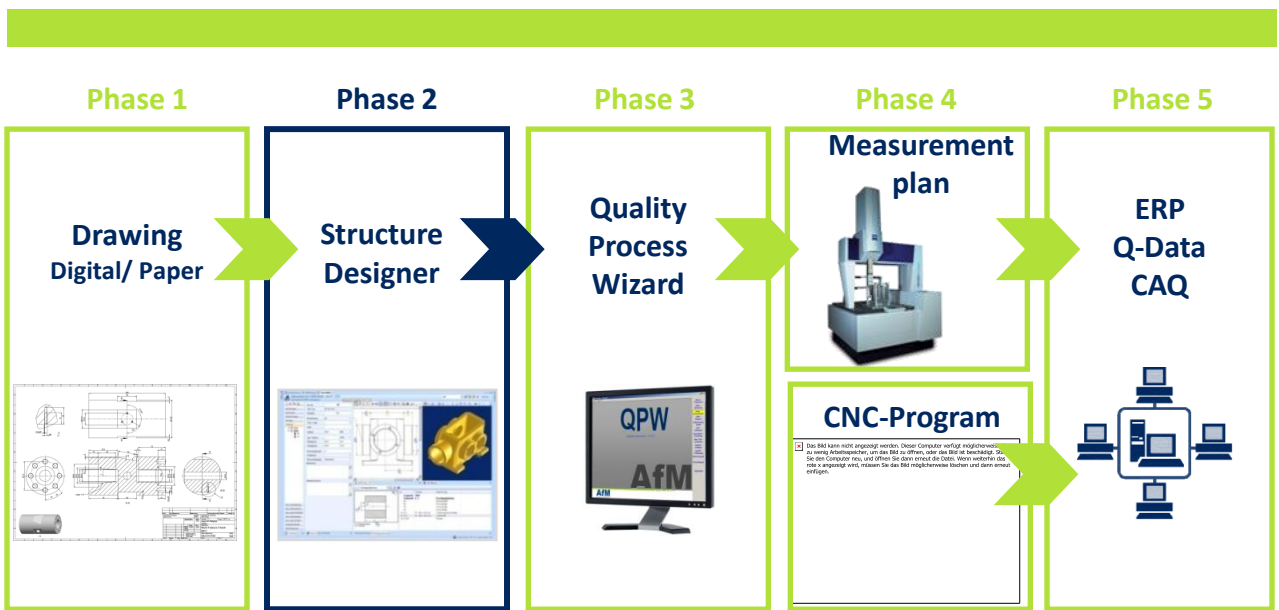


## Structure Designer



### Target groups

Production companies that have no in-house CAD development. Products are produced using the CAD data received for the customer or technical drawings.

### Level of the technology

The supplied information is usually manually processed by different departments (calculation, planning, production, quality control) using different systems.

### Innovation

The drawing contents (CAD/Paper) will be:

- Semi automatated
- From a central location
- Processed once
- Structurally prepared
- Allocated to the constructional elements (planes, bores, threads, slots ect.) and made available for subsequent processes.

### Procedure

The drawing contents will be completely assessed and each individual feature will be issued a clear „stamp number“.

As reference for measuring, the coordinate systems can be graphically interactive defined in structure designer. Then interrelated individual features will be grouped to constructional elements and then allocated the relevant coordinate system. The resultant data is then exported through a .xml interface and made available for the Quality Process Wizard (QPW) to use for subsequent processes!

### Amendments management

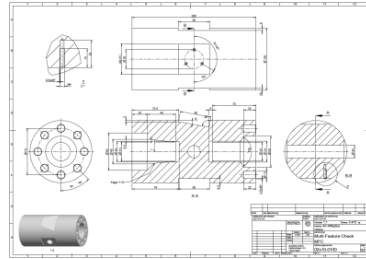
Modifications made to the CAD model or drawing will be entered into Structure Designer and an updated .xml file with a new version number created.

### Your advantages

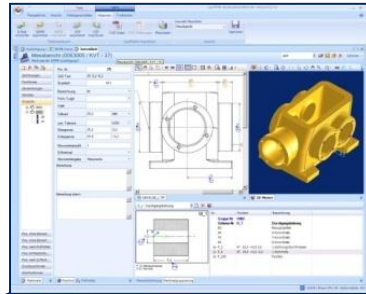
- Manufacturing information from any source is able to be read
- Full automatic stamping process of 2D digital drawings
- Semi automatic stamping process of paper drawings through OCR (optical character recognition)
- Allocation from reference coordinate systems
- Grouping of interrelated individual features
- Single operation data preparation at a central location

# Cross-disciplinary process optimisation

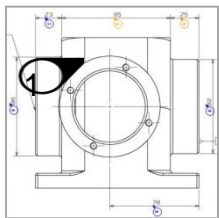
Read-in drawing  
Digital/ Paper



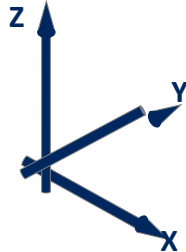
Structure Designer



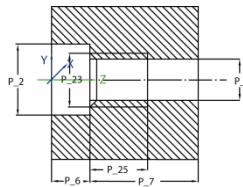
1. Stamp drawings



2. Define coordinate systems



3. Allocate features of  
constructional elements



4. Preparation of  
.xml file



**AfM**  
Accuracy for Machines

AfM Technology GmbH

Gartenstraße 133

73430 Aalen

Germany

Phone +49 (0) 73 61 88 96 08-0

Fax +49 (0) 73 61 88 96 08-99

www.afm-tec.de

info@afm-tec.de